

Check-in Survey – KS2

Name: _____

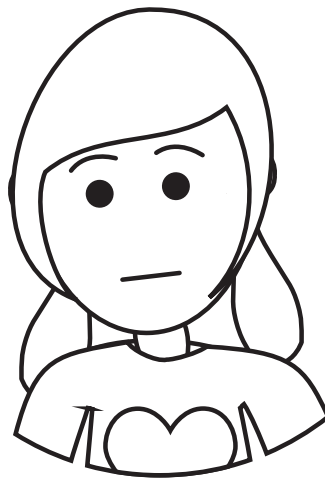
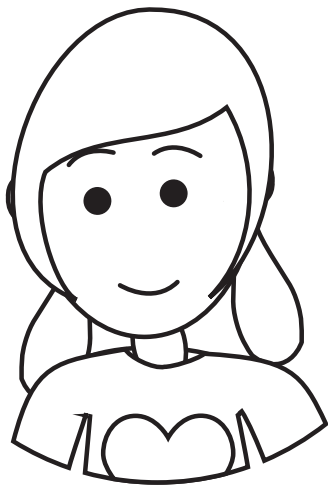
Class: _____

Hello to all of you! We care about all of you and we thought we'd find out how you are doing and what your day-to-day life is like during Lockdown.

Parents, please take a few minutes to answer each of the questions on this survey with your child as thoroughly as possible, so that we can have a better idea of how best to support you now and when school is open again.

.....

How are you feeling? (Colour one in).



What are you looking forward to at school?

- Seeing your friends
- Seeing your teacher
- School dinners
- Playing
- Learning

What do you think might be different?

What do you think might be the same?



Who have you been at home with?

What have you been doing at home?

What has made you happy during Lockdown?

What has made you sad?

What have you enjoyed about being at home?

Is there anything you would like school to know about?

.....

Parents, is there anything you feel your child might need support with?

